



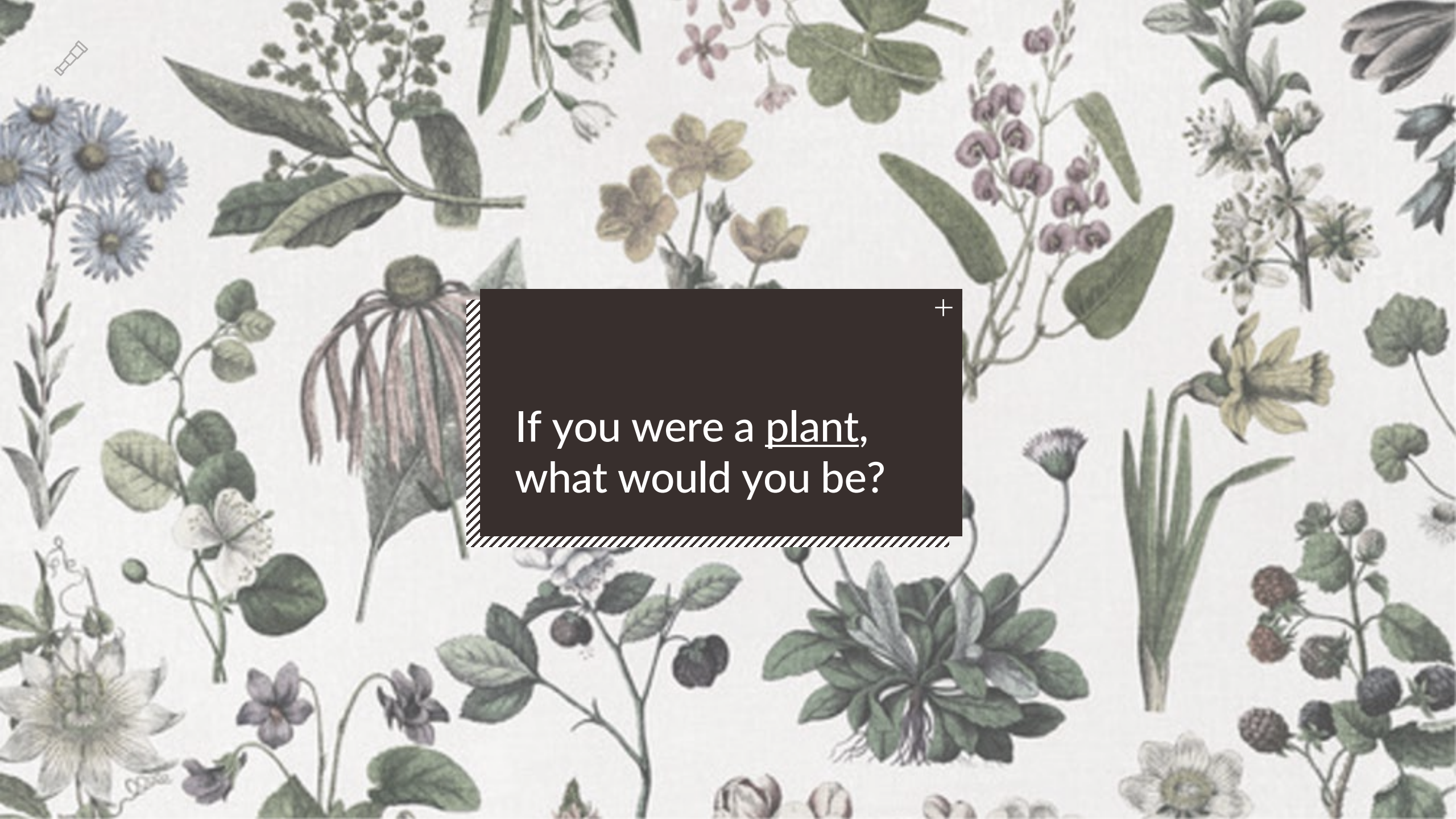
THE ENVISION GREENHOUSE

Leadership Mentoring Network



Sow righteousness, reap love. It's time to **till the ready earth, it's time to **dig in** with God, Until he arrives with righteousness **ripe for harvest**.**

//Hosea 10:12 (MSG)

A dense, repeating pattern of various botanical illustrations on a light background. The plants include blue daisies, yellow flowers, purple berries, white flowers, and green leaves. A dark rectangular box with a white border is centered over the pattern.

If you were a plant,
what would you be?

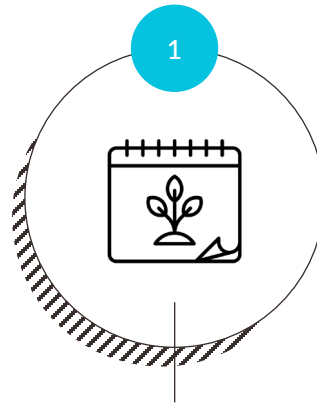
A detailed botanical illustration background featuring various plants and flowers. In the top left, there is a small white icon of a ruler or scale. The plants include green leaves, purple flowers, white flowers with pink buds, and yellow flowers.

The purpose of The Envision Greenhouse is to provide diverse young leaders in the Alliance in Canada with meaningful mentoring relationships and creative environments to foster growth and collaboration that goes beyond the local context.

We believe that as mentees and mentors, we can benefit in learning from one another's backgrounds, ministry or career vocations, skills, and spiritual journeys for the sake of community and leadership development as part of the Kingdom of God.

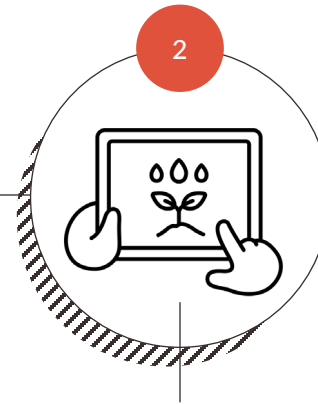


What is The Envision Greenhouse?



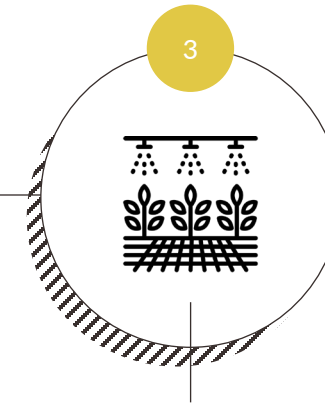
6-month cohort program

Where emerging leaders can meet, collaborate, and serve together through mentoring relationships facilitated by Envision Canada.



Predominantly digital

Where mentees will get to be a part of this intentional growth community while staying in their local context as they continue to study, work, care for their families and serve their local church.



Creative platform

More than just a creative outlet, this will teach emerging leaders how to sharpen their skills in bringing innovation to church development, global missions, funding strategies, and much more.



format

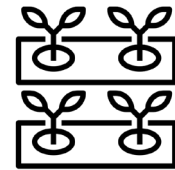
What does it look like?

Every mentee comes in for a season and can stay for multiple seasons. The purpose is for each mentee to find a safe environment for growth alongside others before they continue to grow beyond.



1-1 Mentoring

- Mentees find a local mentor they can meet regularly
- Follow Envision 101 or specific know-be-do based on area of expertise
- Mentor to ask the hard questions
- Meet bi-weekly (once every other week)



Group Mentoring

- Cross-pollination peer-to-peer mentoring
- Organized into topic-related subgroups
- Mentees take on a 6-month long project
- Cared for by a mentor that oversees the group
- Frequency of meeting TBD by group and mentor



All Mentee Gathering

- All mentee gatherings facilitated by Envision & other leader development partners
- Mentees all follow same 5 intro sessions based on 5 pillars
- Once a month for online sessions or in-person weekend x3 when possible, or mix



What are the initial focus groups?

01

Oral Communication & Storytelling

Whether it's preaching, sharing, storytelling, or spoken word, we are passionate to teach a new generation on ways the Gospel can be proclaimed differently and to a diverse audience.

02

Development & Entrepreneurship

Whether it's Business as Missions, for-profit missional businesses, organizational leadership, or funding development, we believe that God calls people to pursue these for His Kingdom impact.

03

Community Development & Outreach

Whether it's reaching your elderly neighbour, floormates from overseas, recent immigrants, or the elite urbanites, we know that God is on the move for these communities.

04

Leading as Women

Whether at the pulpit, in business meetings, in public office, or even at home, God has empowered women to lead His Church and for His Gospel to be incarnated through them.

05

Artists & Creatives

Whether it would be through music, videography, illustration, graphic design, photography, we look to creators to use their skills to express the glory of God in all its majesty.

06

Justice & Compassion

Whether it's through Creation Care, combatting human trafficking or caring for the marginalized, we believe in bringing the whole Gospel to all.



format

Defining the Relationship

Role descriptions

We connect people in meaningful mentoring relationships that promote whole person development, because we believe that it takes a village to grow a leader.



The Mentor

Must be recognized within the Alliance for their experience and leadership. Mentors can choose to oversee a group, be a 1-1 mentor, or be an expert for all mentee gatherings. Mentors commit their time in either of these areas and benefit from the pools of creativity and spiritual journeys with mentees.

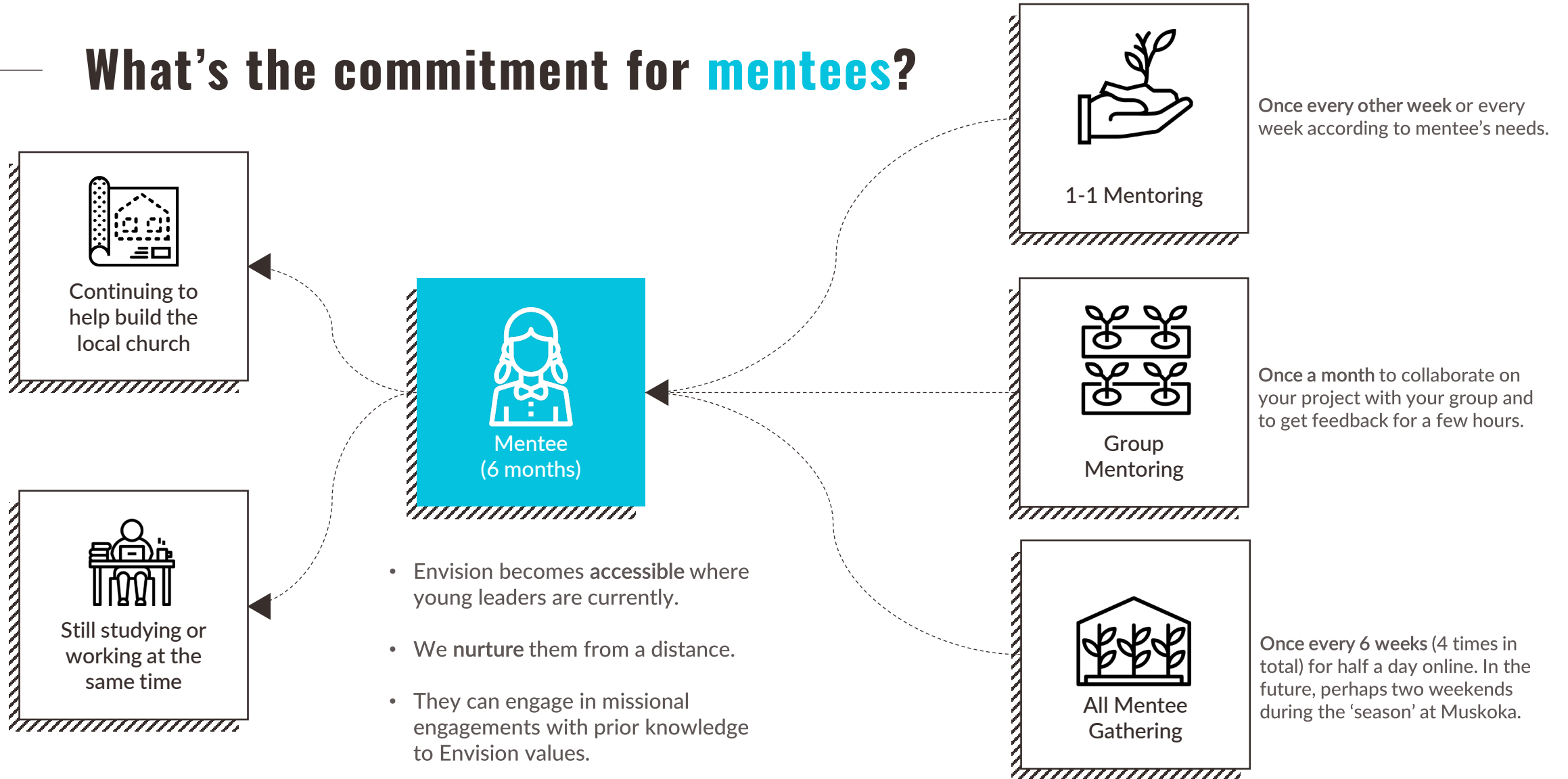


The Mentee

Typically 18-35-years-old, these young adults are already recognized as emerging leaders in their local context and are referred to participate in a “season” cohort in the hopes that they network with other leaders, grow in their skillsets by joining a group, and learn to become future mentors themselves.

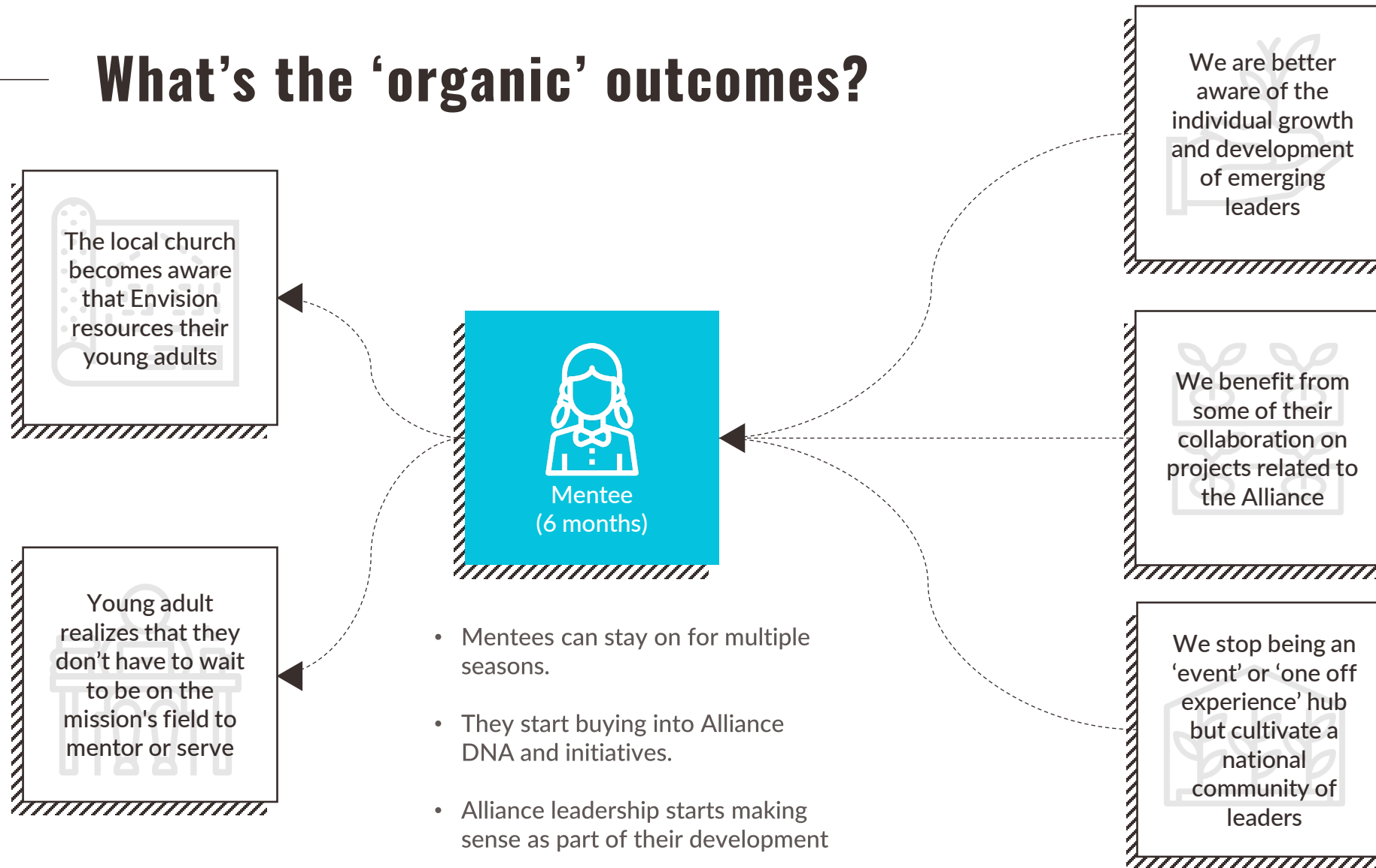


What's the commitment for **mentees**?



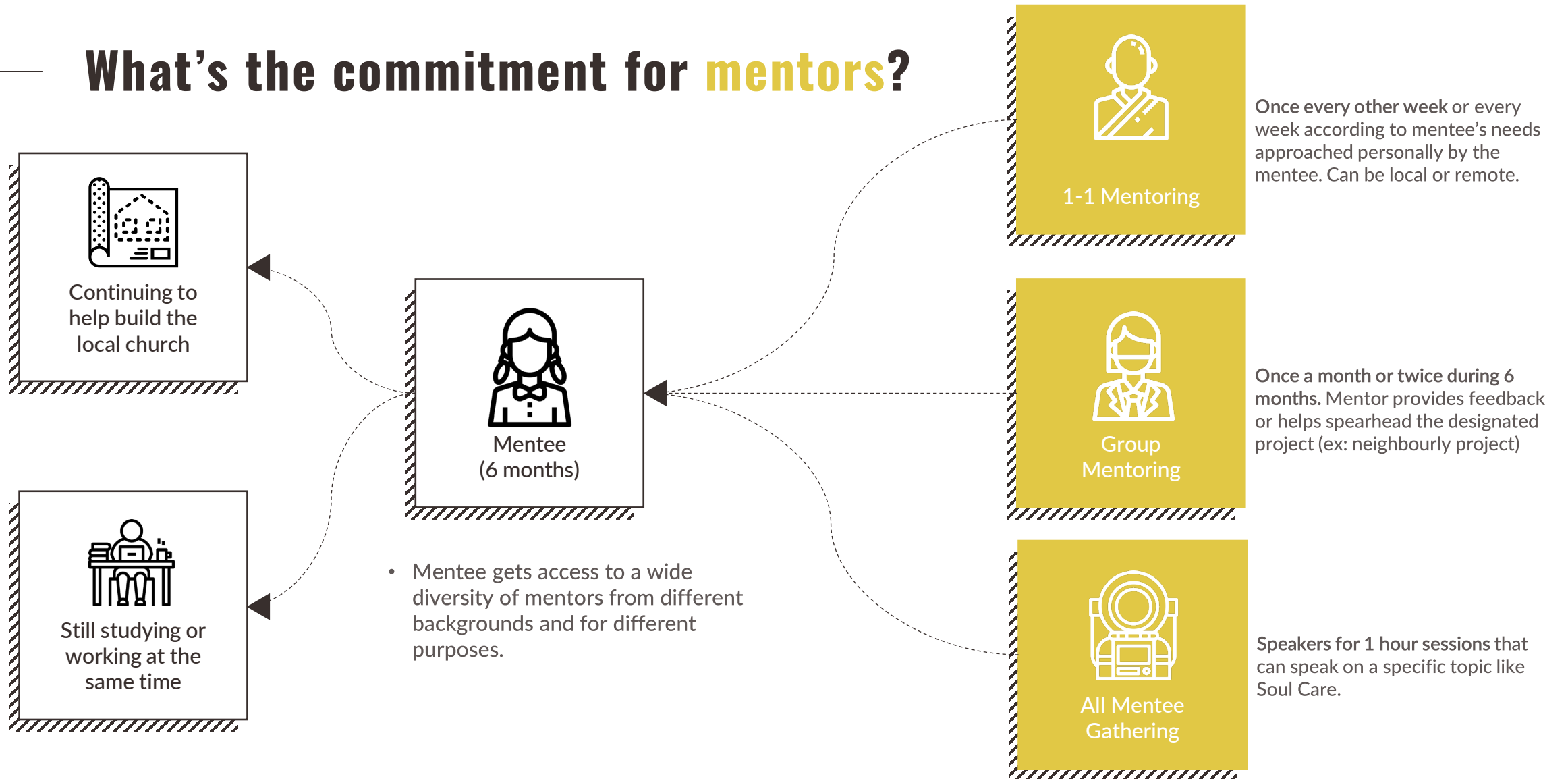


What's the 'organic' outcomes?





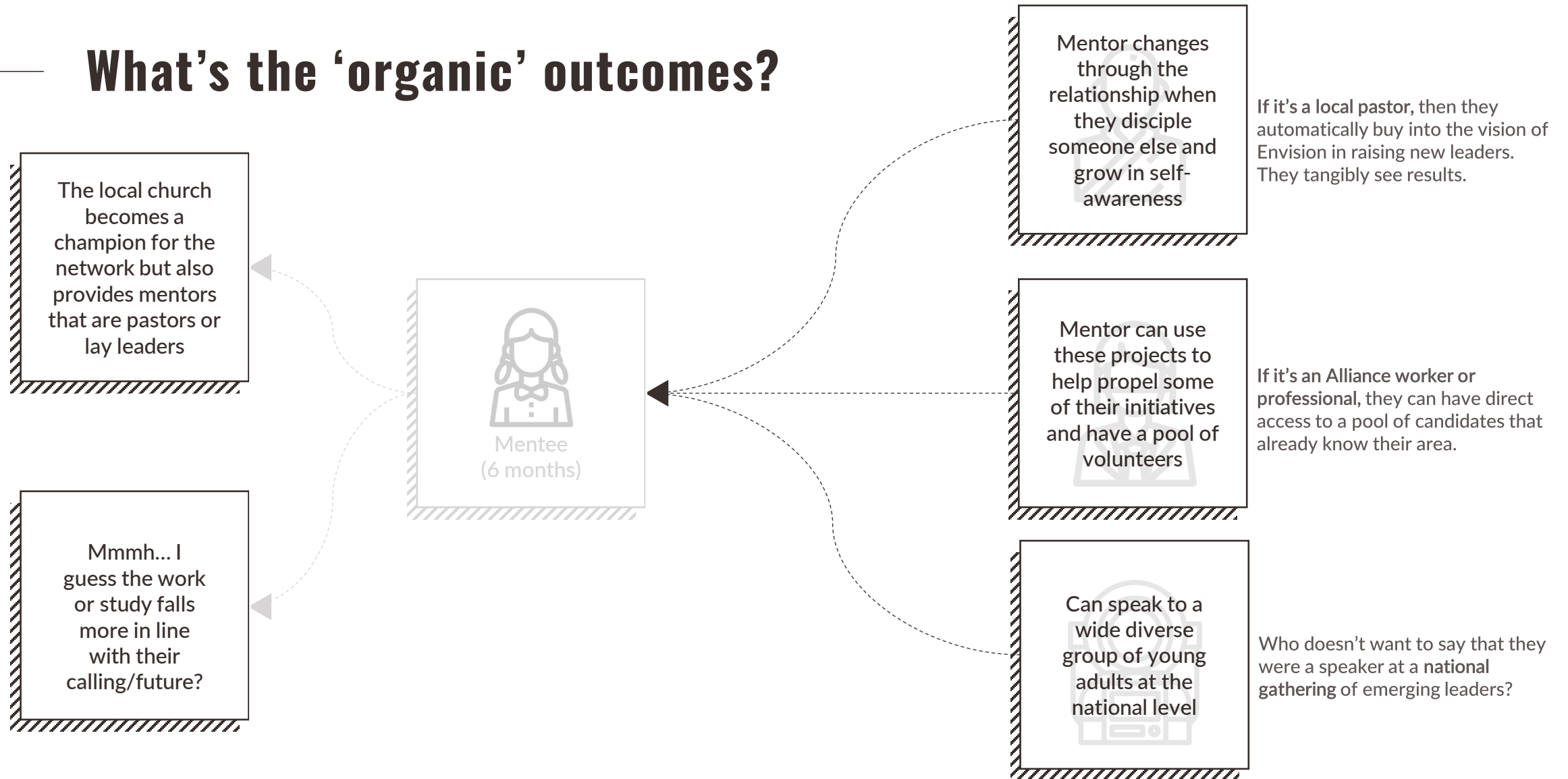
What's the commitment for **mentors**?





format

What's the 'organic' outcomes?





THE ENVISION GREENHOUSE

Leadership Mentoring Network

FOLLOW US



// ENVISIONCMA